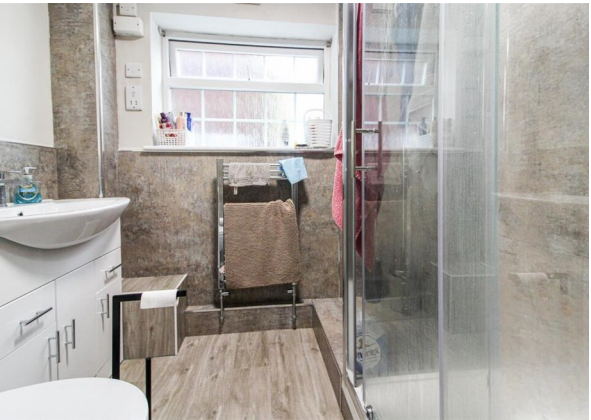


Derby Road, Nottingham, NG7 2DX

£1,350 Per Month

Council Tax Band: B



Ground Floor | Spacious | Opposite Lenton Park

Looking for a comfortable, spacious home in a top Nottingham location? This well-presented 2-bedroom maisonette on Derby Road is perfect for students, postgrads, or professionals

Amazing Location

Located directly opposite Lenton Park
8 mins walk to Jubilee Campus
18 mins walk to University of Nottingham
15 mins walk to QMC
Shops, cafes & takeaways right on your doorstep

Everything you need within walking distance!

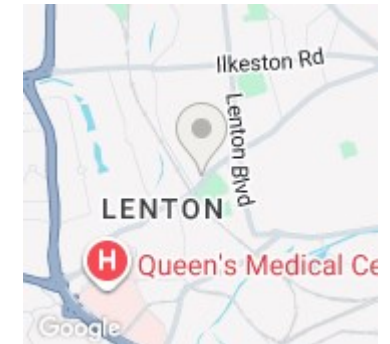
Property Features

2 Large Double Bedrooms
Bright, spacious & fully furnished
Ideal for sharing

Comfortable lounge space



E&O Property Powered by Open House



Energy Efficiency Rating		
	Current	Potential
Very energy efficient - lower running costs		
(92 plus) A		
(81-91) B		
(69-80) C	76	
(55-68) D		
(39-54) E		
(21-38) F		
(1-20) G		
Not energy efficient - higher running costs		
England & Wales	EU Directive 2002/91/EC	